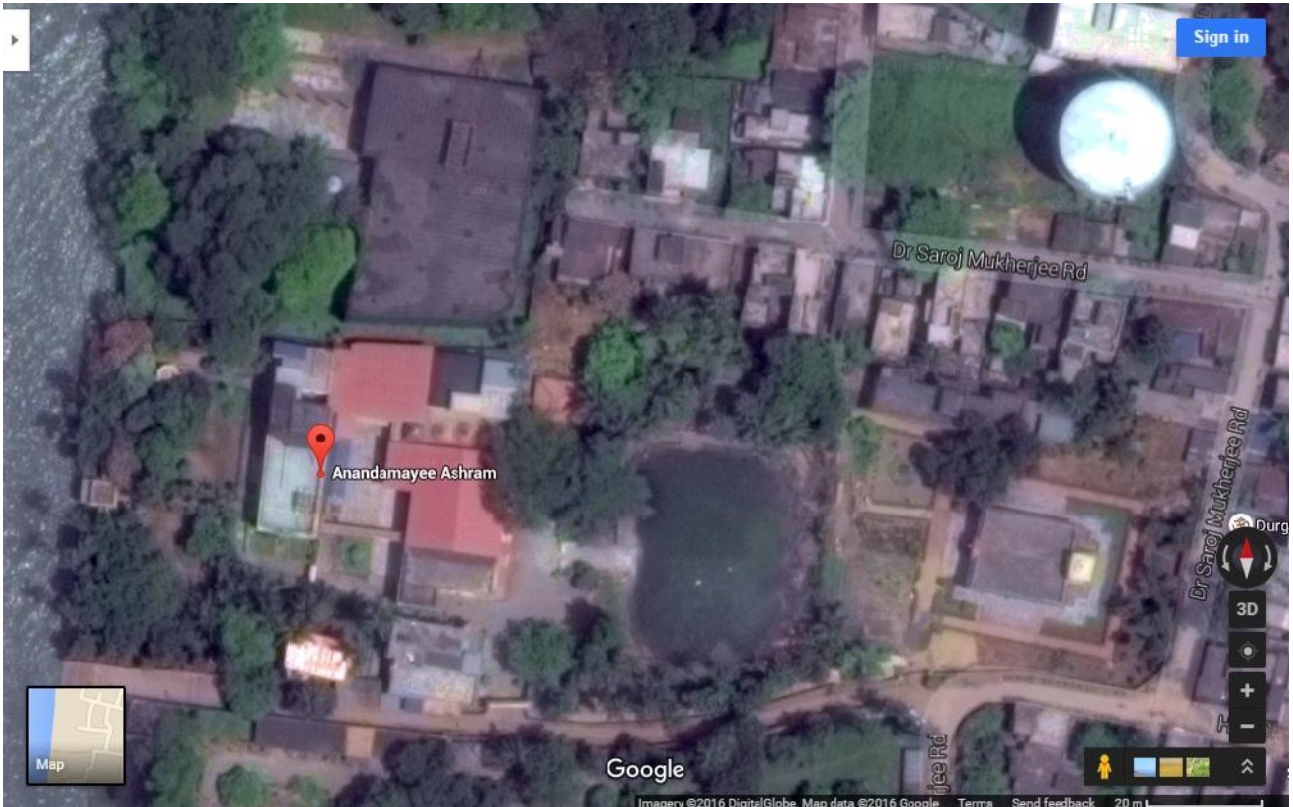


AGARPARA ASHRAM

See also <https://www.youtube.com/watch?v=9atld7EBM9g>



Aerial view of Agarpara Ashram showing the Hooghly River on the left, ashram buildings left centre and the large pond in the middle.



Entrance to the Satsang Hall and Temple



Inside the Satsang Hall



One of Sri Ma's rooms



Another of Sri Ma's rooms



Main Ashram building



Monument to Baba Bholanath (Sri Ma's husband)



Japa kutir, on the banks of the river.